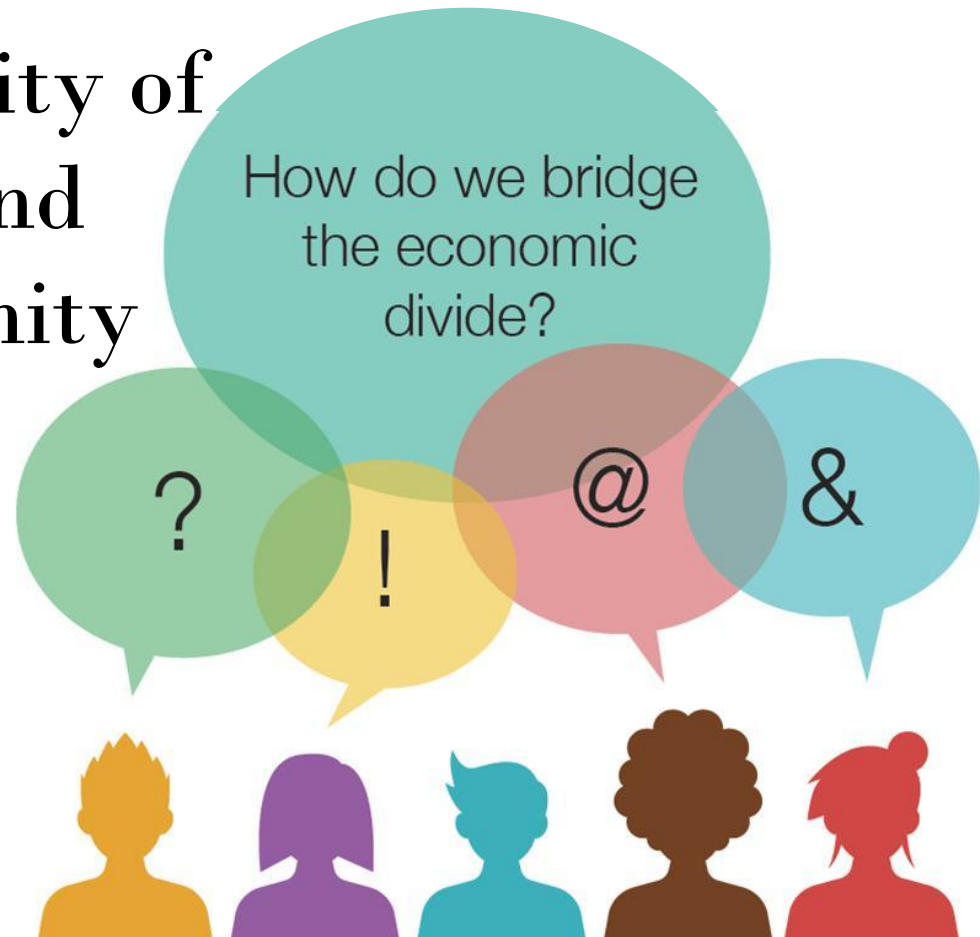


Building a Community of Equity and Opportunity

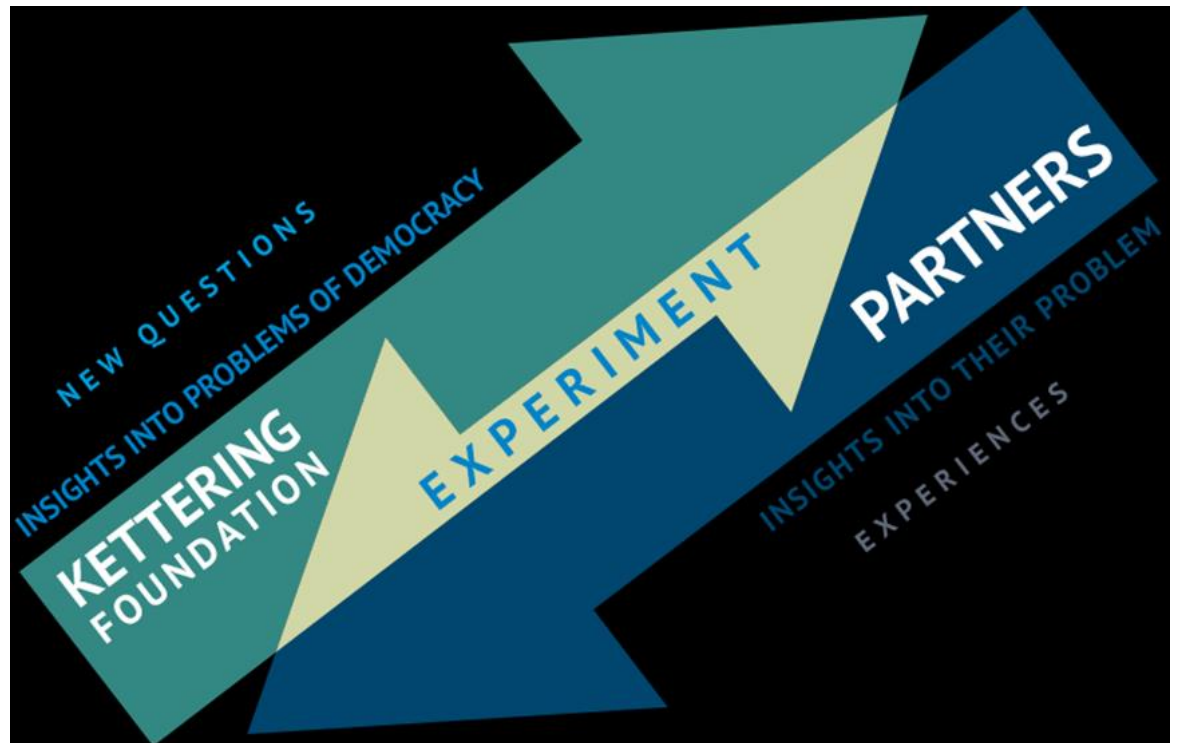


Report to the CAN Board of Directors
October 14, 2016

Kettering Foundation

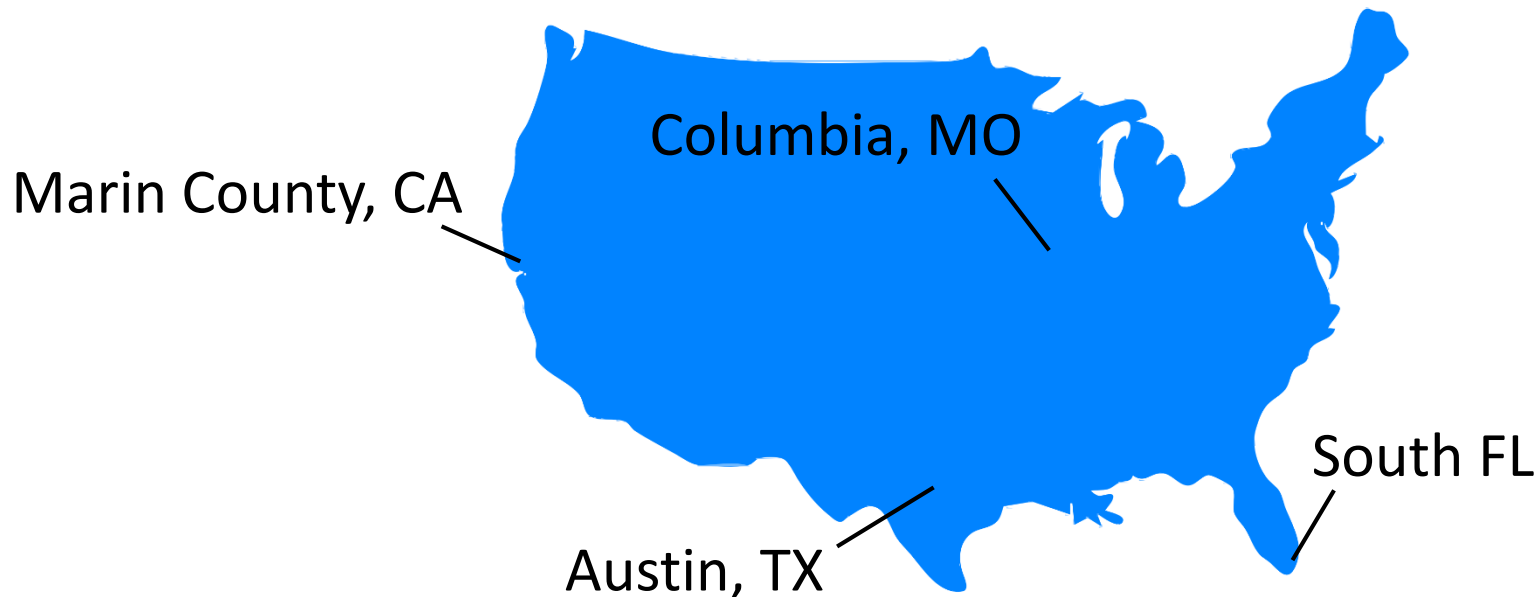
What does it take to make democracy work as it should?

- Dialogue
- Respect
- Listening
- Understanding



Local Based Issue Guides

Teams from each of the four communities participating in the Learning Exchange met at the Kettering Foundation in Dayton, Ohio several times since February of 2015 to share experiences and to receive training and support from the Kettering Foundation.



Austin Team

- Raul Alvarez and Mary Dodd, CAN
- Christopher Kennedy, Leadership Austin
- Simone Talma Flowers, Interfaith Action Central Texas
- Diane Miller, Civic Collaboration



Timeline

Spring 2015: Selected a “wicked” local issue – the economic divide

Summer 2015: Hosted 6 “listening sessions” to discover what people think and feel about the economic divide

Winter 2015-2016: Drafted an issue guide outlining the problem and possible solutions from three vantage points, based on what we heard

Winter-Spring 2016: Tested the issue guide with the CAN Community Council and the Leadership Austin Board of Directors, revised it, then published the guide (in English and Spanish) and created a video

Spring-Summer 2016: Hosted a facilitator training at St. Edward’s University and, with the help of these facilitators, hosted three dialogues

1. United Methodist Church in downtown Austin
2. El Buen Samaritano in South Austin (en Español and English)
3. Goodwill Industries in Northeast Austin

Fall 2016: Hosted an on-line dialogue with tools developed by the Kettering Foundation National Issues Forum

Building a Community of Equity and Opportunity



 Community Advancement Network

 Civic
Collaboration

 iACT
INTERFAITH ACTION of CENTRAL TEXAS

 LEADERSHIP
AUSTIN
Igniting Passion

 Kettering
Foundation

Dialogues held May-June 2016



1. United Methodist Church in downtown Austin
2. El Buen Samaritano in South Austin (en Español)
3. Goodwill Industries in Northeast Austin

Who participated?

- 93 people from 39 different zip codes
- Three-fourths were women
- Almost one-half were White, 31% were Hispanic, 13% were African American and 7% were Asian or Other
- 40% were between the ages of 46 and 64
- 27% were between the ages of 18 and 30
- 20% were aged 31 – 45
- 13% were 65+



We began the conversation with these quotes from Austin leaders

“We have an affordability crisis ... A family making the medium income can now no longer qualify for a loan to buy a median-priced house.”

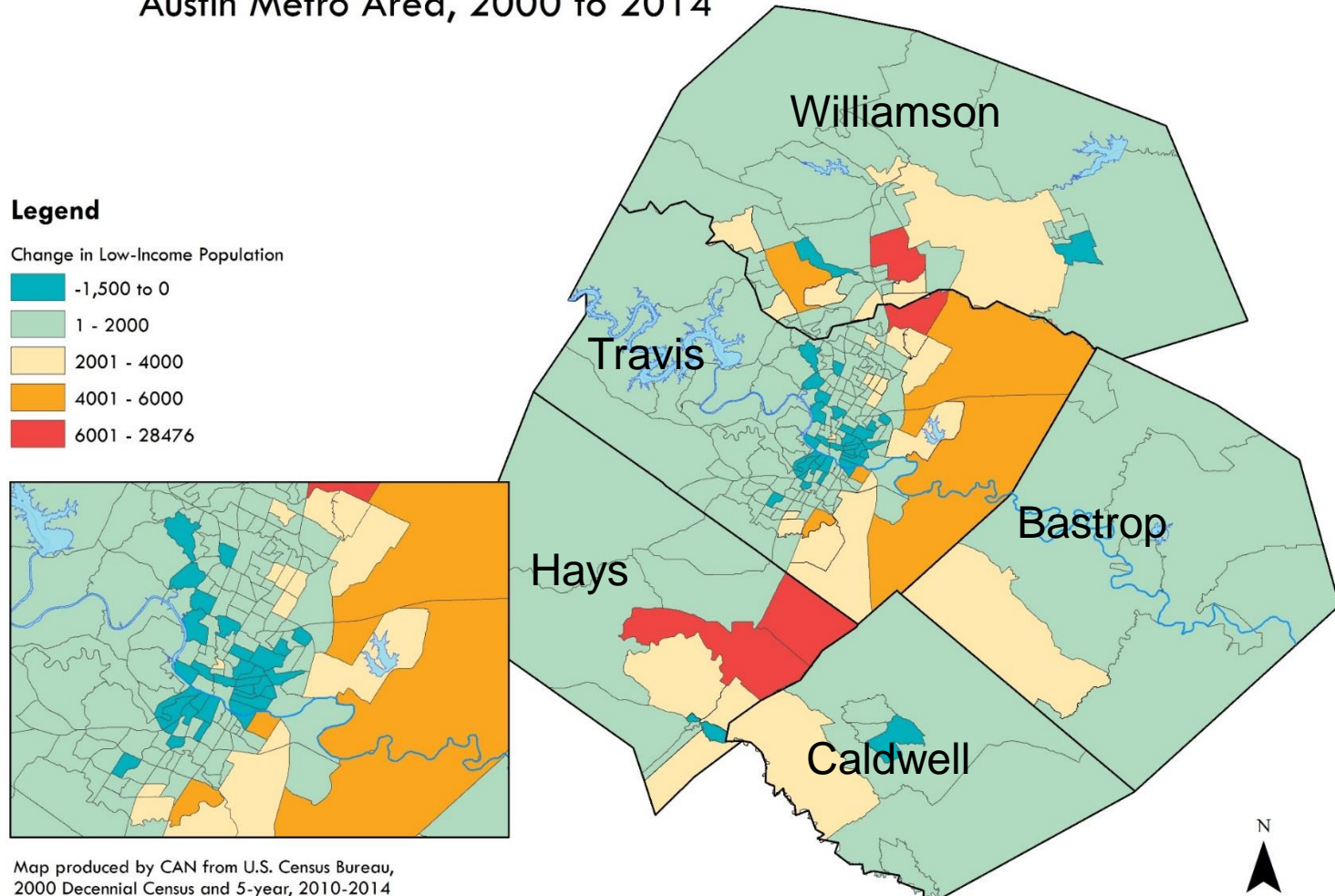
Mayor Steve Adler

“We are experiencing a growing anxiety that the prosperity in our community is not for everyone.”

Travis County Judge
Sarah Eckhardt

We shared maps showing large increases in low-income population outside the central city

Low-Income Population Change by Census Tract,
Austin Metro Area, 2000 to 2014



Map produced by CAN from U.S. Census Bureau,
2000 Decennial Census and 5-year, 2010-2014
American Community Survey data.

3 approaches

1. ***Level the playing field:*** Make sure policies and investments help people thrive, not just survive.
2. ***Unleash the creativity of the private sector:*** Promote entrepreneurship and public/private partnerships to expand economic prosperity.
3. ***Hold on to what makes Austin special:*** Show that the people, places, history and culture of our community matter.

The Process



Level the playing field: Issues Explored

- People were concerned about increasingly unaffordable housing, high property taxes and being “pushed” out of the city, which also increases commute time, transportation costs and leaves no options besides driving.
- Education was viewed as very important, but people thought the focus should not only be on college prep but also job training and real-world skills. They want employers to support training for locals rather than recruiting talent from elsewhere.

Unleash the creativity of the private sector: Issues Explored

- Some people felt public-private partnerships and socially responsible investing could help to address housing and job training challenges but they want to see strong accountability and transparency requirements
- Many people felt that supporting small businesses was a key as many of the opportunities, especially in minority communities, will come from small businesses.

Hold on to what makes Austin special: Issues Explored

- Some people felt that we are losing an important part of who we are and we need to value diversity within our communities.
- Many felt that civic engagement and encouraging people to get involved, vote and advocate for what they are passionate about will help empower marginalized and disenfranchised individuals.
- Some people wanted to continue to dialogue about the root causes of inequities and confront institutional and individual racism.

The Top 5 Ideas

1. Create housing opportunities that are affordable for people at all levels of employment. (65 votes)
2. Increase public/private partnerships for job training programs that help develop homegrown talent and meet demands of healthcare, technology and other high wage industries. (55 votes)
3. Establish an on-going, community-driven effort to confront institutional and individual racism. (45 votes)
4. Ensure all students graduate from high school and are ready for college and career success. (44 votes)
5. Motivate young people to vote and be more civically engaged. (40 votes)

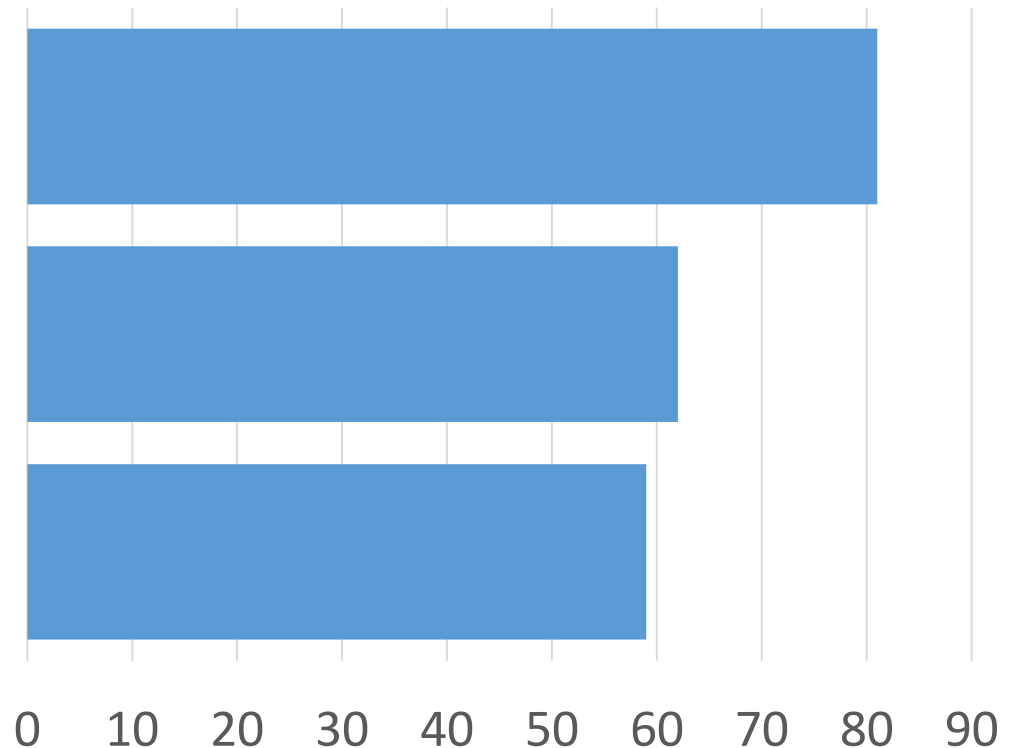
63% of participants reported thinking differently about the issue after the dialogue, and most wanted to continue the conversation in various ways...

I would participate in the following activities if they were available:

A community alliance focused on advocating for institutional changes needed to address inequality

A training program focused on the societal and institutional factors contributing to inequality

A speaker series and/or film screenings on related topics



How can we use what we have learned?

- We could develop a discussion guide tied to the CAN Dashboard to enrich our conversations around our annual release of the CAN Dashboard and to collect data that can be used by CAN leaders to develop future work plans.
- We have a better understanding of when and how this community dialogue tool may be used to address community issues or challenges in the future, including an online platform for dialogue.